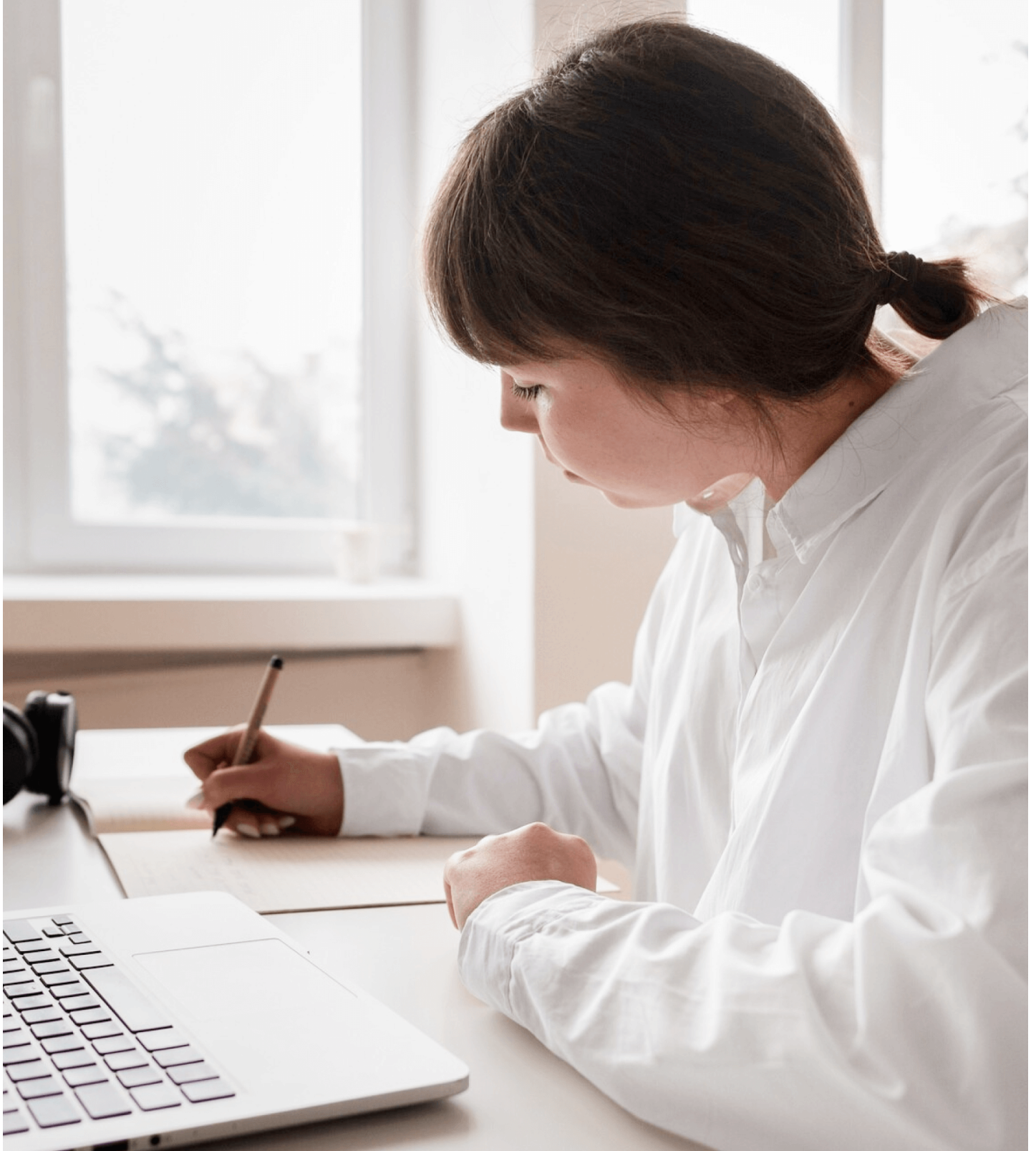


Unlock Your Mind: The Key to Transformative ADHD Evaluation Awaits!

Attention Deficit Hyperactivity Disorder (ADHD) is a condition that affects millions of individuals worldwide, impacting their daily lives in profound ways. Symptoms such as difficulty focusing, impulsiveness, and hyperactivity can create significant challenges in both personal and professional settings. For many, navigating life with ADHD can feel overwhelming and isolating. However, the journey toward clarity and effective management begins with a crucial step: an evaluation.

[In-person ADHD](#) evaluations offer the advantage of accurate assessment, allowing for tailored treatment plans that address each individual's unique needs. By engaging face-to-face with a qualified professional, individuals can unlock a better understanding of their condition and explore effective strategies to improve their quality of life.



Understanding ADHD and the Need for Evaluation

ADHD is a neurodevelopmental disorder that can manifest in various ways, affecting attention, impulse control, and activity levels. Individuals with ADHD often struggle with tasks requiring sustained focus, leading to challenges in academic, occupational, and social settings. Many misconceptions surround ADHD, including the belief that it is merely a childhood disorder or that it can be outgrown. In reality, ADHD persists into adulthood for many individuals, requiring ongoing support and management. Seeking a professional evaluation is essential for gaining an accurate diagnosis, as it allows individuals to understand their unique challenges and access appropriate interventions. Recognizing and addressing ADHD can lead to significant improvements in daily functioning and overall well-being.

What to Expect During an In-Person ADHD Evaluation

An in-person ADHD evaluation typically begins with an initial assessment, where the evaluator gathers information about the individual's history, symptoms, and any previous interventions. This stage may involve structured interviews and questionnaires that help paint a comprehensive picture of the individual's experiences. Face-to-face interaction is particularly beneficial, as it allows the evaluator to observe non-verbal cues and establish rapport. Depending on the evaluator's approach, standardized tests may also be administered to assess attention, memory, and executive functioning skills. Throughout the evaluation, individuals are encouraged to share their thoughts and feelings candidly, ensuring that the assessment is as accurate and personalized as possible. This thorough process not only aids in diagnosis but also helps in formulating a tailored treatment plan that meets the individual's specific needs.

The Role of the Evaluator

Professionals conducting ADHD evaluations typically have extensive training in psychology, psychiatry, or counseling. Their qualifications often include advanced degrees and specialized certifications in ADHD assessment and treatment. A skilled evaluator creates a comfortable and empathetic environment, making it easier for individuals to discuss their concerns openly. This supportive atmosphere is crucial, as it encourages honest dialogue, allowing the evaluator to gain deeper insights into the individual's experiences. By fostering trust and understanding, evaluators can effectively guide individuals through the process, ensuring that the evaluation is both informative and empowering.

Scheduling Your Appointment

Finding a qualified professional for an in-person ADHD evaluation can feel daunting, but there are several steps you can take to simplify the process. Start by researching local mental health professionals who specialize in ADHD assessments. Look for credentials, experience, and patient reviews to ensure they have a solid reputation. Once you have identified potential evaluators, prepare for your appointment by jotting down your symptoms, questions, and any relevant personal history. This preparation can help streamline the evaluation process and ensure that you receive the most accurate assessment possible. Don't hesitate to reach out to potential evaluators with any questions you may have about their approach or what to expect during your visit.

Transformative Outcomes of In-Person Evaluations

Receiving an in-person ADHD evaluation can lead to transformative outcomes that positively impact various facets of life. A thorough evaluation often results in personalized treatment plans that may include therapy, medication, or lifestyle changes tailored to the individual's needs. Many people report significant improvements in their ability to focus, manage time, and engage in relationships after receiving appropriate support. For instance, a friend of mine shared how an evaluation helped him understand his ADHD better, leading to strategies that improved his work performance and personal relationships. These success stories highlight the importance of proper evaluation in unlocking potential and enhancing quality of life for those affected by ADHD.

Enhancing Lives Through Tailored ADHD Evaluations

In summary, the journey toward understanding and managing ADHD begins with an in-person evaluation. By recognizing the symptoms and challenges associated with the disorder, individuals can take the crucial step of seeking professional help. In-person evaluations provide the opportunity for accurate assessment and tailored treatment, leading to improved outcomes and a better quality of life. If you or someone you know is struggling with ADHD, consider scheduling an appointment today. Taking this first step can unlock the door to a brighter, more focused future.