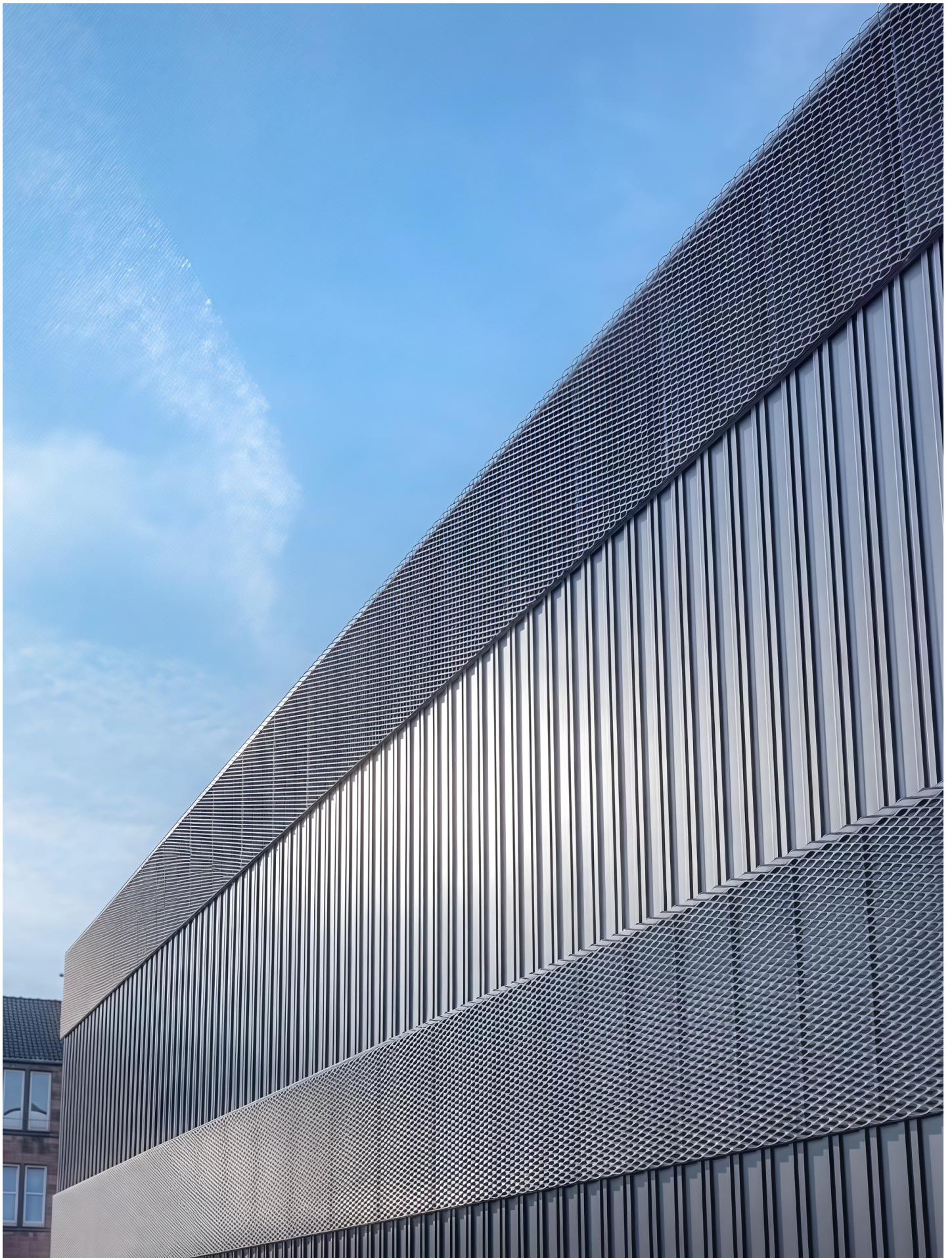


## Unveiling the Secrets of Stainless Steel Decorative Mesh: Trends, Techniques, and Transformations!

Stainless steel decorative mesh has emerged as a prominent feature in modern architecture and design, blending aesthetic appeal with functional versatility. This unique material finds applications in a variety of industries, from interior design to construction, serving as both a decorative element and a structural component. Its ability to enhance spaces through light filtration, visual interest, and safety makes it a sought-after choice for designers and architects alike. As we delve deeper into the world of [stainless steel decorative mesh manufacturers](#), we will explore current trends, innovative production techniques, and the shifting dynamics of the market that are shaping its future.





**Understanding Stainless Steel Decorative Mesh**

Stainless steel decorative mesh is a woven or fabricated mesh made from stainless steel, known for its durability, corrosion resistance, and aesthetic versatility. The composition typically includes various grades of stainless steel, with the most common being 304 and 316, which are prized for their strength and resistance



to environmental factors. Decorative mesh can be categorized into several types, including woven wire mesh, expanded metal, and perforated sheets, each offering unique visual textures and applications. In architecture, it is often used for facades, balustrades, and interior partitions, providing both functional benefits like safety and aesthetic enhancements that add character to spaces. Interior designers utilize this material in furniture, wall art, and lighting fixtures, showcasing its adaptability and charm across a myriad of settings.

## Current Trends in Decorative Mesh Design

In recent years, the design landscape for stainless steel decorative mesh has evolved significantly, reflecting contemporary preferences for minimalism and sustainability. Designers are increasingly exploring intricate patterns and finishes, from geometric shapes to organic forms, that allow for personalized expression while maintaining functionality. Textured surfaces such as brushed, polished, or powder-coated finishes have gained popularity, enhancing the visual appeal of the mesh while also offering protection against wear and tear. Moreover, innovative applications, like using decorative mesh in vertical gardens and outdoor installations, have emerged, blending nature with architecture. Personal experiences from friends in the design industry reveal that incorporating stainless steel decorative mesh not only elevates the design aesthetic but also draws attention to sustainable practices, as the material can be recycled and reused.

## Production Techniques and Capabilities

The production of stainless steel decorative mesh involves various sophisticated techniques that ensure quality, durability, and design precision. The primary methods include weaving, welding, and perforating, each tailored to meet specific design requirements. Weaving techniques, such as plain weave, twill weave, and Dutch weave, allow for the creation of intricate patterns and varying mesh densities. Material selection is critical, as manufacturers often choose high-quality stainless steel grades to enhance the longevity of the product. Quality control measures are implemented throughout the production process to ensure that the final output meets industry standards, focusing on aspects such as finish quality, structural integrity, and resistance to corrosion. This meticulous attention to detail in production not only guarantees a superior product but also fosters innovation, enabling manufacturers to respond to unique design requests effectively.

## Market Trends and Future Outlook

The stainless steel decorative mesh market is currently experiencing notable trends that reflect broader societal changes. As sustainability becomes a key focus across industries, demand for eco-friendly materials has surged, prompting manufacturers to invest in sustainable production methods. Additionally, the rise of urbanization has fueled the need for innovative architectural solutions, driving the demand for decorative mesh in both residential and commercial projects. Emerging markets, particularly in Asia-Pacific, are witnessing a rapid increase in construction activities, further propelling the growth of the stainless steel decorative mesh segment. Insights from industry reports suggest that as technology continues to advance, we can expect even more innovative applications and designs to emerge, positioning stainless steel decorative mesh as a staple in contemporary design and architecture.

## Assessing the Future of Decorative Mesh

Throughout this exploration of stainless steel decorative mesh, we have uncovered its multifaceted role in modern design and functionality. From its diverse applications in architecture and interior design to the innovative production techniques that enhance its appeal, stainless steel decorative mesh stands out as a versatile and sustainable material. As market trends evolve and sustainability takes center stage, the future of decorative mesh appears promising, ensuring its relevance in contemporary design landscapes. The insights gained highlight not only the material's aesthetic value but also its significance in promoting innovative solutions for a sustainable future.