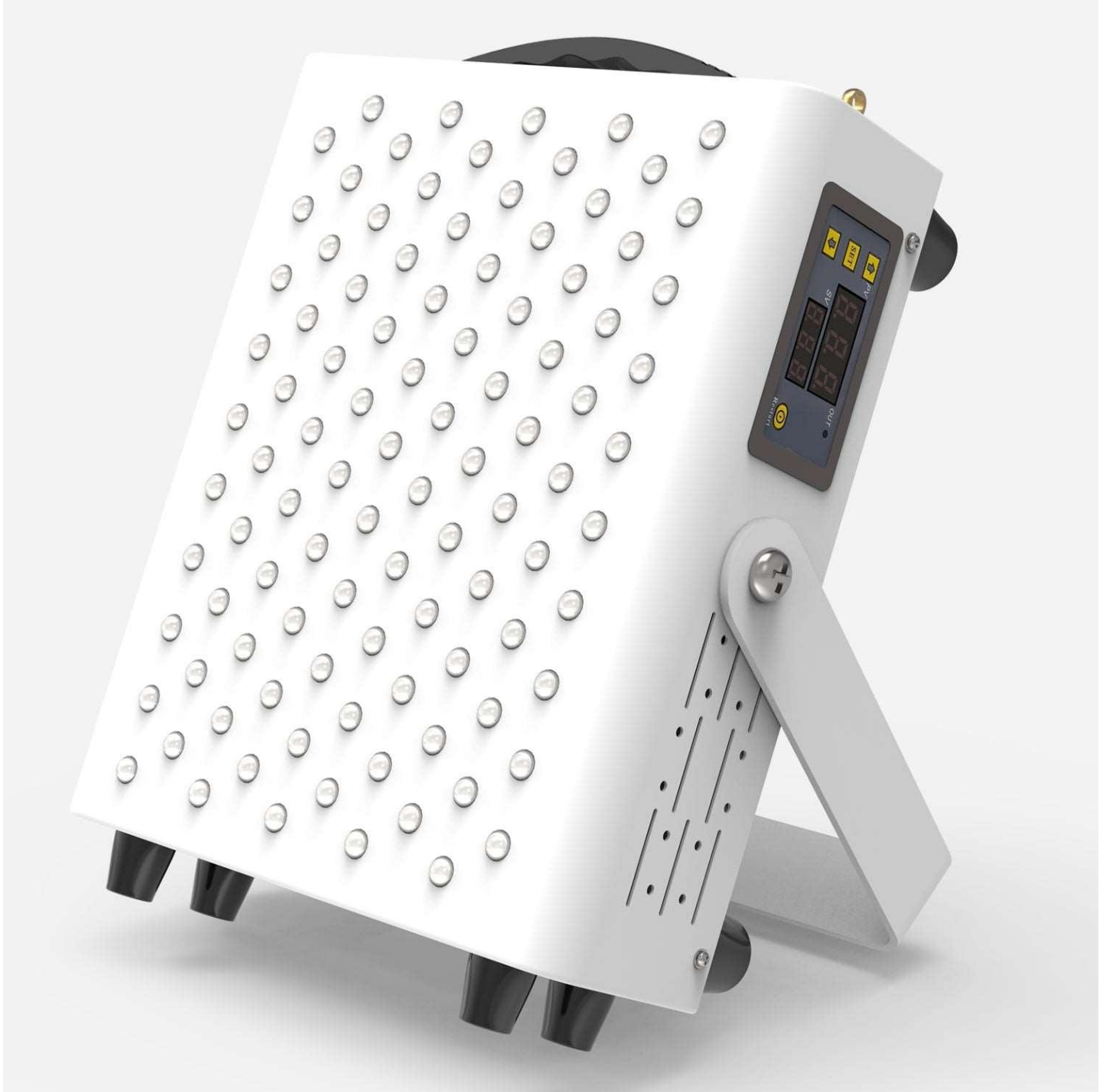


Unlock Radiance: Discover the Secret Power of Red Light Therapy Panels!

In recent years, red light therapy has surged in popularity as a go-to solution for enhancing overall wellness and beauty. This innovative therapy harnesses specific wavelengths of light to stimulate healing and rejuvenation at the cellular level. Many users have reported significant benefits, including clearer skin, reduced inflammation, and improved mood. As more people seek natural alternatives for health and beauty treatments, red light therapy panels have emerged as a prominent choice. This article aims to guide you in comparing and selecting the [best red light therapy panels](#) available on the market, empowering you to make an informed decision for your wellness journey.



Understanding Red Light Therapy

Red light therapy (RLT) is a non-invasive treatment that utilizes low-level wavelengths of red light to promote healing and rejuvenation. The science behind RLT lies in its ability to penetrate the skin and stimulate cellular activity. Specifically, red light wavelengths, typically between 600-650 nm, are absorbed by the mitochondria in our cells, leading to increased energy production. This process can result in various health benefits, including skin rejuvenation, improved circulation, and pain relief. Many users, including a friend of mine who struggled with chronic pain, have experienced remarkable results after incorporating RLT into their routine, often reporting alleviated symptoms and enhanced skin vitality.

Key Features to Consider When Choosing Red Light Panels

When selecting a red light therapy panel, there are several critical features to consider to ensure you choose the best option for your needs. First, the wavelength is paramount; panels that emit light in the 600-850 nm range are generally considered the most effective. Intensity is also important; higher intensity can lead to quicker results. Additionally, consider the size of the panel – larger panels can treat more extensive areas of the body simultaneously. Ease of use is another factor; look for panels with user-friendly designs that fit seamlessly into your routine. Lastly, safety features and certifications should not be overlooked, as they ensure that the device meets health standards and minimizes risks.

Comparing Different Types of Red Light Therapy Panels

There is a variety of red light therapy panels available to suit different needs and preferences. Handheld devices are excellent for targeted treatments, allowing users to focus on specific areas, such as wrinkles or joint pain. However, they may require more time and effort for larger treatment areas. On the other hand, full-body panels offer comprehensive coverage, making them ideal for users seeking to treat multiple areas at once. While they can be more expensive, many find the investment worthwhile for the convenience and efficiency. Targeted treatment devices, such as masks or pads, are also popular for facial rejuvenation and localized pain relief. Each type has its pros and cons, so consider your specific needs as you make your choice.

Tips for Using Red Light Therapy Panels Effectively

To maximize the benefits of red light therapy panels, it's essential to use them effectively. Start by following the manufacturer's guidelines regarding duration and frequency of use; typically, sessions last between 10-20 minutes, a few times a week. Positioning the panel correctly is crucial; ensure that the light is directed towards the area you want to treat, maintaining a consistent distance as recommended. Additionally, avoid common mistakes such as overusing the panel, which can lead to skin irritation or diminished results. By adhering to these tips, users can ensure a safe and effective red light therapy experience, ultimately enhancing their wellness journey.

Final Thoughts on Red Light Therapy Benefits

In summary, red light therapy offers an array of benefits that can significantly enhance your well-being and beauty regimen. From improved skin health to pain relief, the potential gains from using red light therapy panels are vast. As you consider your options, take into account your personal needs, preferences, and the features that matter most to you. By choosing the right red light therapy panel, you can unlock the secret to radiance and embark on a transformative wellness journey that empowers you to look and feel your best.